

eFOCUS

PRIME 10 Mini Dash Cam

App. Manual

FHD 2CH Wi-Fi
Mini Dash Cam



The App. functions are subject to change without prior notice.

■ Table of contents

■ General Management

1. Basic information
2. How to activate/deactivate mobile data (or mobile Smart Network)

■ Smartphone App - Android

1. How to install
2. How to run
3. How to use
4. Setting
5. How to update Firmware
6. Changing ID or Password
7. Add a shared phone

■ Smartphone App - iOS

1. How to install
2. How to run
3. How to use
4. Setting
5. How to update Firmware
6. Changing ID or Password

General Management

1. Basic information

- The Wi-Fi name and Password are set as follows when factory-default or factory reset.
 - Wi-Fi name(ID): **FOCUS_PRIME**
 - Password(Password): **12345678**
- If you continue to use the factory-default Wi-Fi name and password, other users may illegally access the app using them. So it is recommended that you change them for security reasons.

Symptom	Checkpoint
1. The connection is unstable. 2. "Configured AP is not found."	Check if the Wi-Fi name(AP) is entered correctly.
3. "Cannot connect to the network because of a wrong password."	Check if the password is entered correctly

2. How to activate/deactivate mobile data (or Smart Network)

- [Android] The switch to mobile data function is used when the Wi-Fi internet connection is slow or unstable.
- When you use this function, WiFi-signal with FOCUS PRIME 10 is automatically released Wi-Fi connection may not be possible.

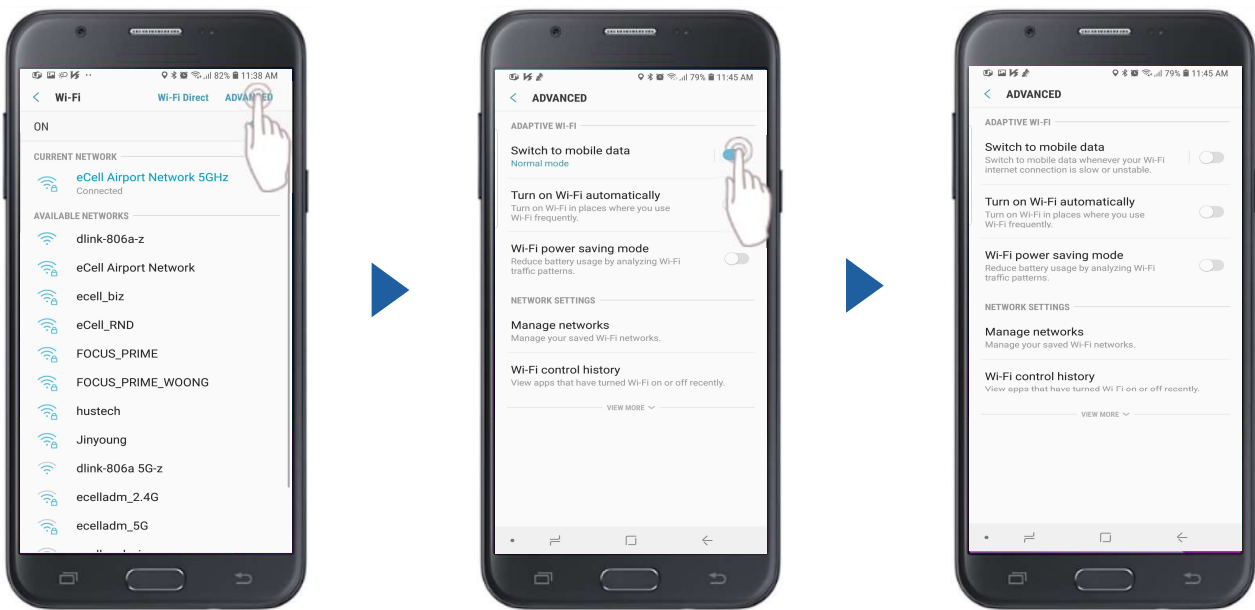
Attention

- 1) Some smartphones may not be supported depending on the smartphone OS.
- 2) If another Bluetooth function is used on the smartphone at the same time, it may affect the Wi-Fi communication.
- 3) Wi-Fi communication is available only with the range of 10 meters and may be affected by the surroundings.

General Management

2. How to activate/deactivate mobile data (or mobile Smart Network)

- Setting >> Connection >> Wi-Fi >> Advanced >> Switch to mobile data (Switch to mobile data (or mobile Smart Network) function may be different on the smartphone OS.)



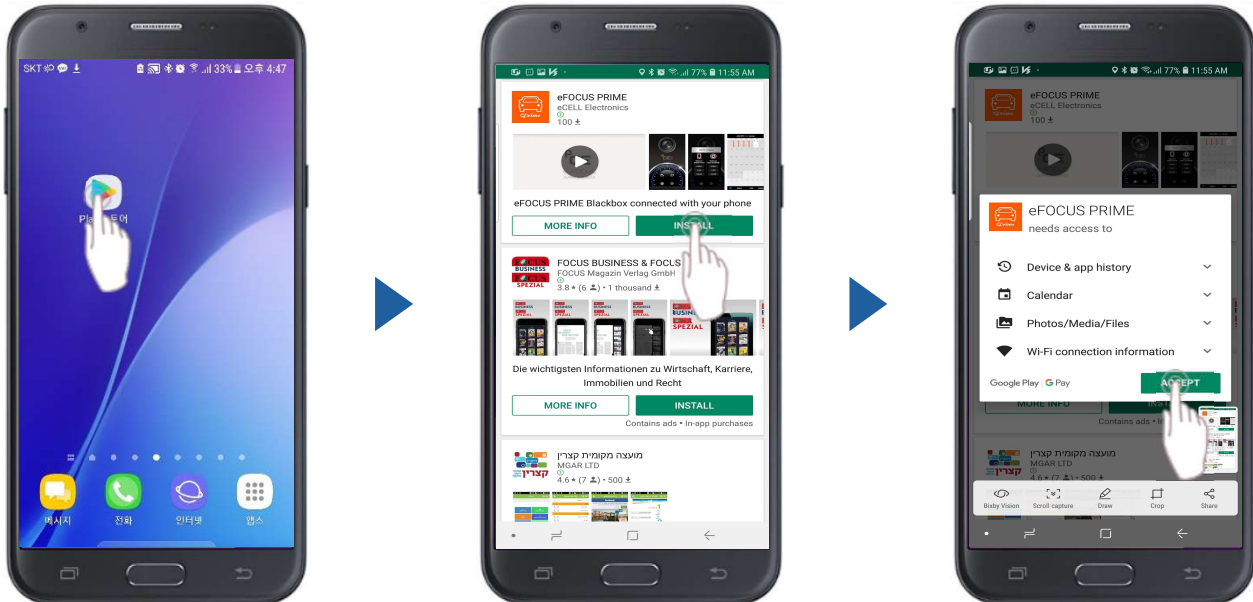
Attention

1. Depending on the user's smartphone or the telecommunication service provider Wi-Fi connection may be unstable.
2. If Wi-Fi connection is problem, this illustrations may vary depending on the smartphone.

Smartphone App - Android

1. How to install

- Search the eFOCUS PRIME at Play Store.
- Install the eFOCUS PRIME App.



2. How to run

- Run the eFOCUS PRIME App.
- If you click on the camera lens icon in the center of the app, you can use the app after Wi-Fi is connected.

[Attention] When you close the app, you must click the lens icon to exit the app. If the app does not end at all, the Wi-Fi connection on your mobile phone may be unstable.



Smartphone App - Android

3. How to use – Operating Instructions



- 1 Wi-Fi connection button (If connected, it turns on in green.)
- 2 View real time video
- 3 View video saved in the dash cam
- 4 setting
- 5 Firmware update

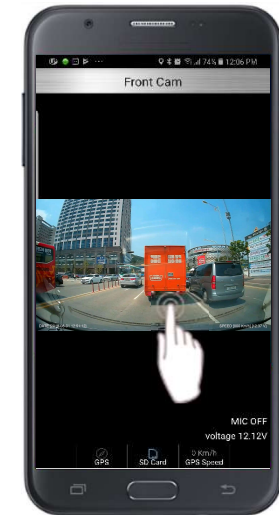
Attention

- 1) Some smartphones may not be supported depending on the smartphone OS.
- 2) If another Bluetooth function is used on the smartphone at the same time, it may affect the Wi-Fi communication.
- 3) Wi-Fi communication is available only with the range of 10 meters and may be affected by the surroundings.

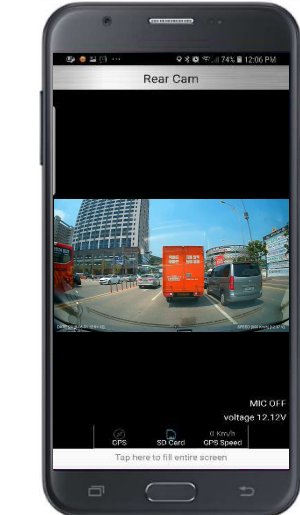
Smartphone App - Android

3. How to use – Viewing Real-Time video

- If you touch the screen on the front screen, the video view menu appears.



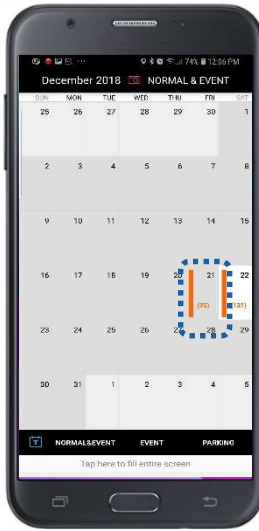
Real-Time video on Front Cam



Real-Time video on Rear Cam

3. How to use – Viewing videos saved in DVR

- You can check the saved Normal & Event video, Event video, and Parking video in each mode.



Normal & Event



Event



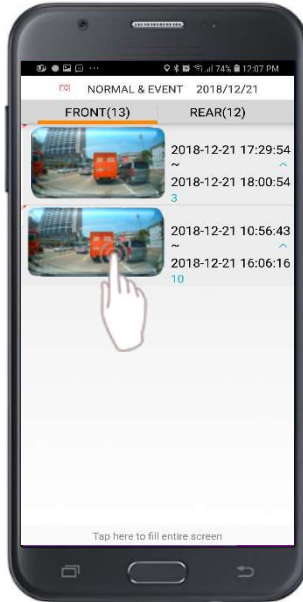
Parking

Smartphone App - Android

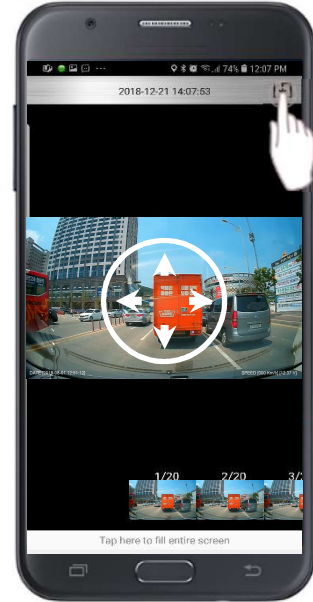
3. How to use – Save Video



1. Select the date.



2. Select a video.



3. Select Save button.



4. Select a video or photo.



5. After saving a video, play the saved video automatically.

Smartphone App - Android

3. How to use – Confirm the video in the phone



1. Select View Album.



2. Select Normal/Event/Parking.



3. Confirm whether to save the video.

Smartphone App - Android

4. App setting



Category	Description	Setting
Speaker	Set speaker sound volume.	High/Normal/Low/Off
Shock sensitivity	Set sensitivity for shock.	High/Normal/Low
Shock sensitivity sound	Set whether to generate a warning sound when a shock is detected..	ON/OFF
Disable voice recording	Set whether to record audio when recording video.	ON/OFF
LED setting	You can turn the main LED on or off.	ON/OFF
Camera brightness	Set camera video recording brightness.	Basic / Bright / Dark
Displayed speed unit	Set the speed display unit.	Km/h / Miles/h
Recording rate	Changes the always: shock: parking record.	40%:30%:30%~40%:50%:10%
Time synchronization	Synchronize with your phone or GPS time.	Cell Phone Time / Mobile Phone & GPS

Smartphone App - Android

4. App setting

Parking Mode Setting

Category	Description	Setting
Rear Camera recording	It sets whether to record the rear camera in parking mode.	ON/OFF
Discharge prevention Voltage setting	When the voltage of the car battery drops below the set voltage. The power of the main body is automatically shut off to protect the battery.	11.8~12.5V

System Setting

Category	Description	Setting
Format SD card	Format the SD card	Yes/No
Change FOCUS Wi-Fi name	Change the Wi-Fi name and password.	Direct input
Add a FOCUS shared phone	It can be used when inputting FOCUS ID and password to additional devices besides the devices that are mainly used.(You can use up to 2 devices in total.)	
Product Setting(1CH/2CH)	Set whether to record front camera(1 channel) or front/rear camera(2 channel).	1 ch / 2 ch

Others

Category	Description	Setting
Manual	You can see App Manual.	

Smartphone App - Android

5. How to update – main body

- Connect to main body through mobile phone > setting > Select the firmware update
- If the version of the program installed on the main body is lower than the version of the program on the phone, the Update button is activated. But, the version of the program is same and the button is not activated.

[Attention] If the power is turned off during the firmware update, it can cause a fatal error. So, special attention is required and during the firmware update, DO NOT turn off the power.



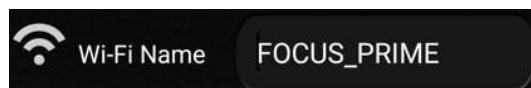
1. Select the firmware update.

2. Click the update menu.

Smartphone App - Android

6. Changing ID or Password

- Connect to main body through mobile phone and select Setting > Wi-Fi Name Change .



Enter your ID.



Enter your password.

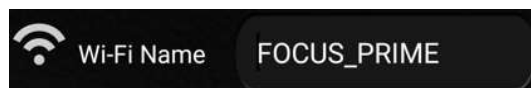
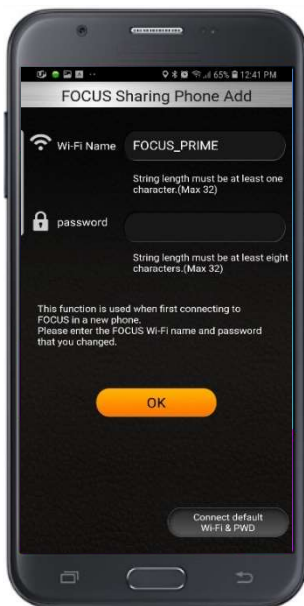


Repeat enter the password.

Smartphone App - Android

7. Add a shared phone

- Run the app > Enter the 'FOCUS Sharing Phone Add' in SYSTEM SETTING .



Enter your ID that you want to connect with main body.



Enter your password.


Smartphone App - iOS

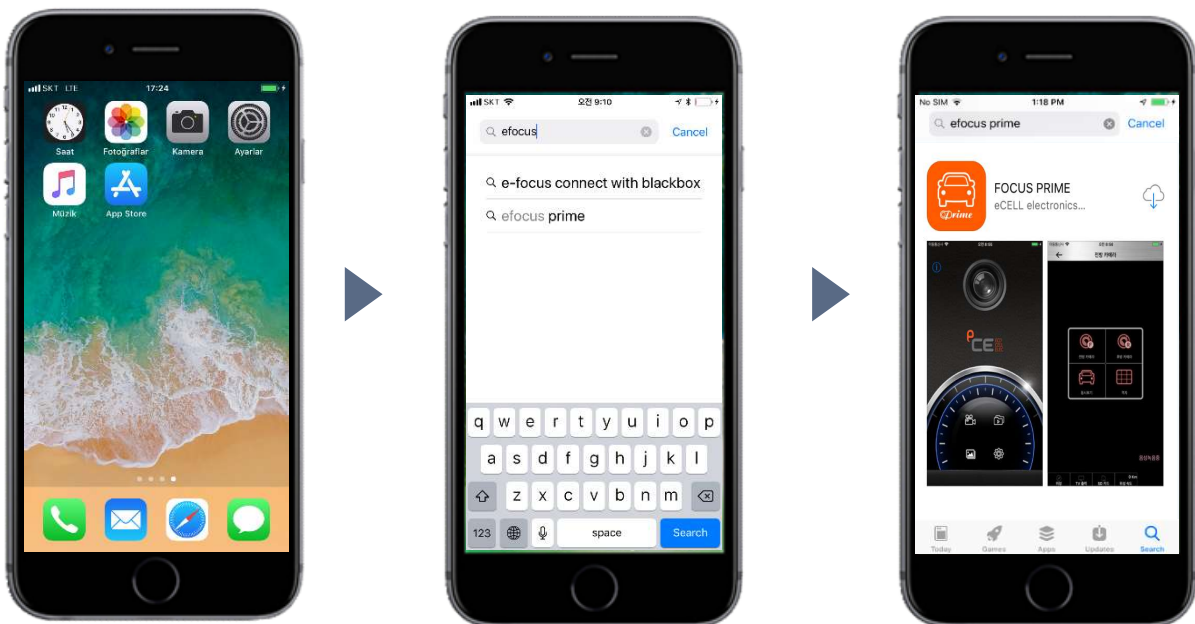
0. Basic information

- The Wi-Fi name and Password are as follows when factory-default or factory reset.
 - Wi-Fi name(ID): **FOCUS_PRIME**
 - Password(Password): **12345678**
- If you continue to use the factory-default Wi-Fi name and password, other users may illegally access the app using them. So it is recommended that you change them for security reasons.

Symptom	Checkpoint
1. The connection is unstable. 2. "Configured AP is not found."	Check if the Wi-Fi name(AP) is entered correctly.
3. "Cannot connect to the network because of a wrong password."	Check if the password is entered correctly

1. How to install

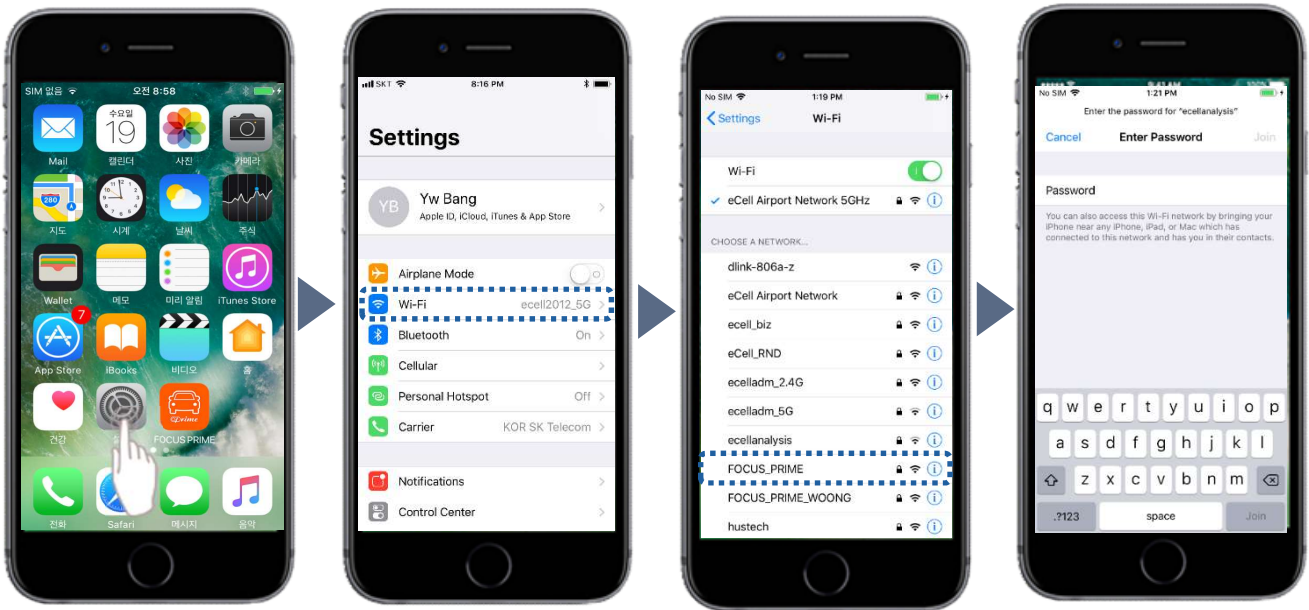
- Search the eFOCUS PRIME at  App Store.
- Install the FOCUS PRIME App.



Smartphone App - iOS

2. How to run

- FOCUS PRIME DVR power on.
- Select the FOCUS PRIME at Setting > Wi-Fi. [Initial Wi-Fi name(ID) is FOCUS_PRIME.]
- Enter the password.[Initial password is 12345678.]



- Run the FOCUS PRIME app.
- If you Click on the camera lens icon in the center of the app, you can use the app after Wi-Fi is connected.

[Attention] When you close the app, you must click the lens icon to exit the app. If the app does not end at all, the Wi-Fi connection on your mobile phone may be unstable.



Smartphone App - iOS

3. How to use - Operating Instructions



- 1 Wi-Fi connection button (If connected, it turns on in green.)
- 2 View real time video
- 3 View video saved in the dash cam
- 4 Viewing an Album
- 5 Setting

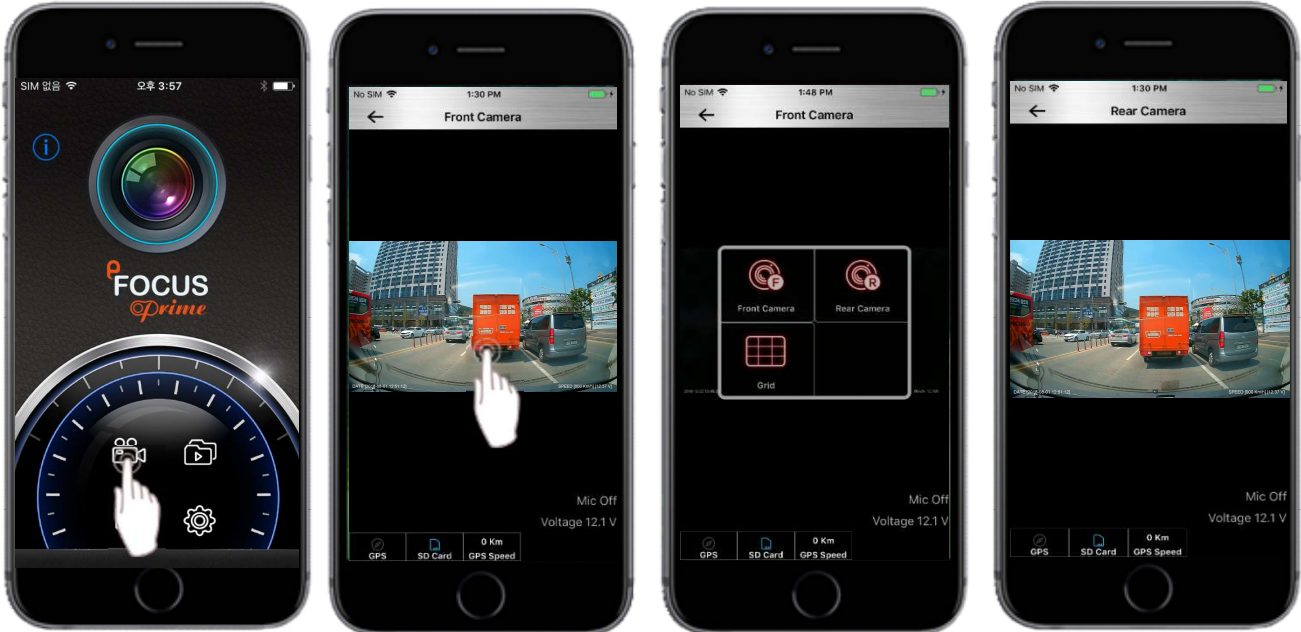
Attention

- 1) If another Bluetooth function is used on the smartphone at the same time, it may affect the Wi-Fi communication.
- 2) Wi-Fi communication is available only with the range of 10 meters and may be affected by the surroundings.

Smartphone App - iOS

3. How to use – Viewing Real-Time video

· If you touch the screen on the front screen, the video view menu appears.

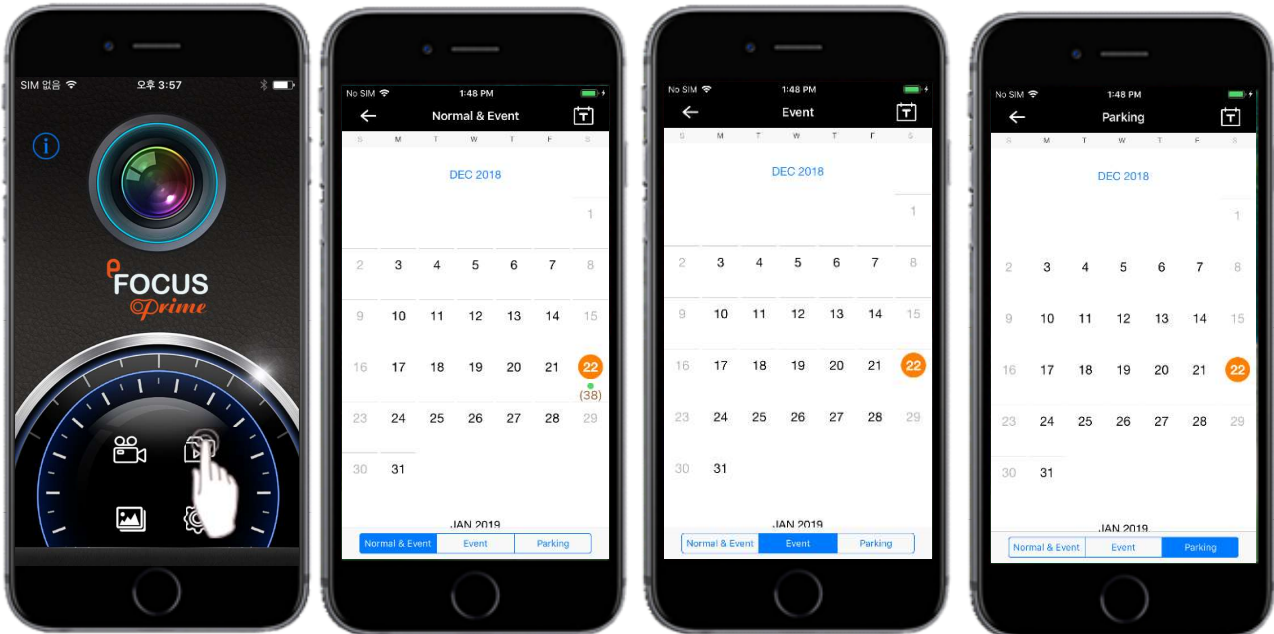


Front Cam

Rear Cam

3. How to use – Viewing videos saved in the black box

· You can check the saved Normal & Event video, Event video, and Parking video in each mode.



18 → date

Normal & Event

Event

Parking

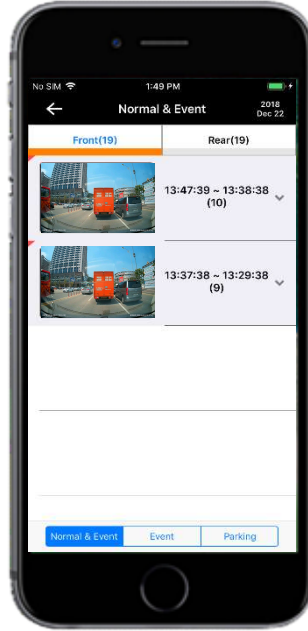
(8) → Number of stored video

Smartphone App - iOS

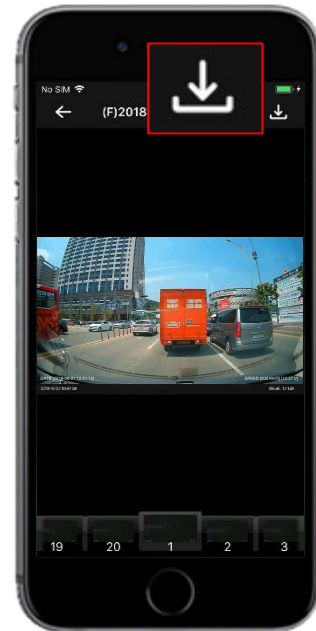
3. How to use – Save Video



1. Select the date.



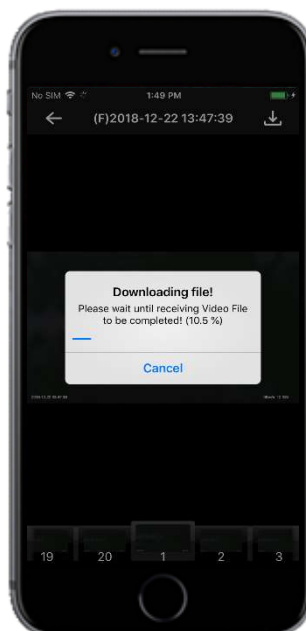
2. Select a video.



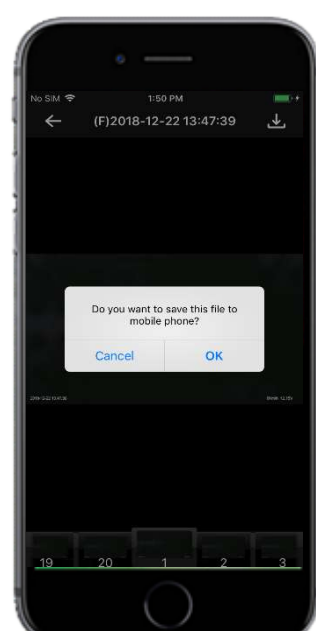
3. Select Save button.



4. Select a video or photo.



5. The video is saved in mobile.



6. After saving a video, play the saved video automatically.

Smartphone App - iOS

3. How to use – Confirm the video in the phone



1. Select View Album.



2. You can confirm the video in the Album Menu.

Attention!

- 1) If the power is not supplied due to the unused black box for a long time, the date can be reset. So, if you are purchasing the black box for the first time or do not have power for a long time, PLEASE CONFIRM the recording date and time.
- 2) In case of 1), connect Wi-Fi between mobile phone and main unit, Please be sure to proceed. (When connecting, set time of black box automatically by time of mobile phone.)
- 3) Regular operation for main body including SD card for normal video recording, please check the status and check the recorded image.

Smartphone App - iOS

4. Setting



Category	Description	Setting
Speaker	Set speaker sound volume.	High/Normal/Low/Off
Shock sensitivity	Set sensitivity for shock.	High/Normal/Low
Shock sensitivity sound	Set whether to generate a warning sound when a shock is detected.	ON/OFF
Disable voice recording	Set whether to record audio when recording video.	ON/OFF
Main LED	You can turn the main LED on or off.	ON/OFF
Speed display unit	Set the speed display unit.	Km/h / Mile/h
Cellular communication	You can turn the cellular communication feature on or off.	ON/OFF
Camera brightness	Set camera video recording brightness.	Basic / Bright / Dark
Time synchronization	Synchronize with your phone or GPS time.	Cell Phone Time / Mobile Phone & GPS
Recording rate	Changes the always: shock: parking record.	40%:30%:30%~40%:50%:10%

Smartphone App - iOS

4. Setting

Parking Mode Setting

Category	Description	Setting
Rear Camera recording	It sets whether to record the rear camera in parking mode.	ON/OFF
Discharge prevention Voltage setting	When the voltage of the car battery drops below the set voltage. The power of the main body is automatically shut off to protect the battery.	11.8~12.5V

System Setting

Category	Description	Setting
Change Wi-Fi name	Change the Wi-Fi name and password.	Direct input
Format SD card	Format the SD card.	Yes/No
Product settings	Set whether to record forward camera(1 channel) or forward / backward camera(2 channel).	1 channel /2 channel

Others

Category	Description	Setting
App version	Displays the current version of the app.	

Smartphone App - iOS

5. How to update Firmware – main body

· Connect to main body through mobile phone > Main > Select the firmware update button(**Fw**) If the version of the program installed on the main body is lower than the version of the program on the phone, the Update button is activated. But, the version of the program is same and the button is not activated.

[Attention] If the power is turned off during the firmware update, it can cause a fatal error. So, special attention is required and during the firmware update, DO NOT turn off the power.



1. Select the firmware update button



2. Click the update menu.

Smartphone App - iOS

6. Changing ID or password

- Run the app and select Setting > Wi-Fi Name Change.



Wi-Fi NAME:
(1~32 characters)

Enter your ID.

Password:
(8~32 characters)

Enter your password.

Password: (confirm)
(8~32 characters)

Repeat enter the password.